



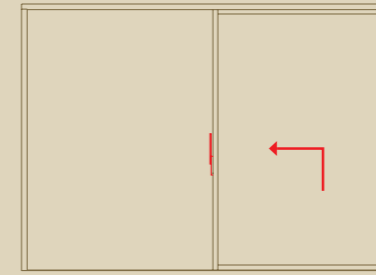
Open, Close, Live

BEYOND BORDERS, TOWARDS THE HORIZON




IMAGO⁺⁺

MORE DESIGN AND SOLUTIONS



 Minimal design

 10% frame 90% glass

 250 - 400 kg

IMAGO⁺⁺

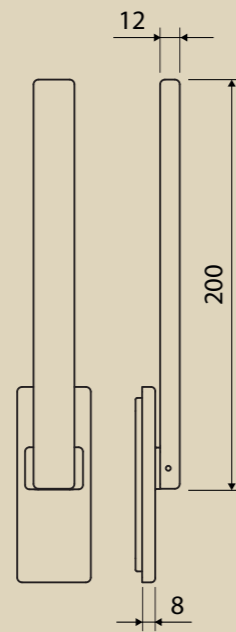
EVOLVED LIFT AND SLIDE.
THINNER FRAME WITH **50 MM** PROFILE
FOR AN EXTREME MINIMALISM.
EVEN MORE GLASS TO GIVE SPACE TO LIGHT.
ONE SYSTEM, MORE DESIGN, MORE SOLUTIONS.

IMAGO⁺⁺ is a system 100% made in Italy.
AGB experience and quality guarantee excellent
performance while sliding, comfort,
thermal insulation and security.



IMAGO⁺⁺

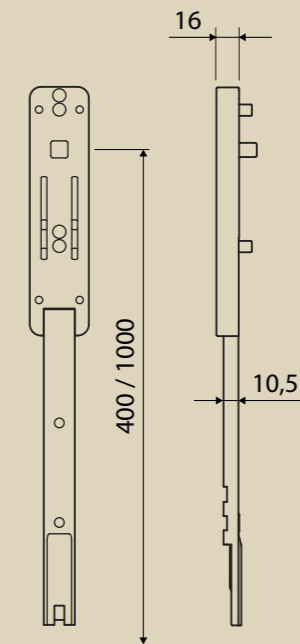
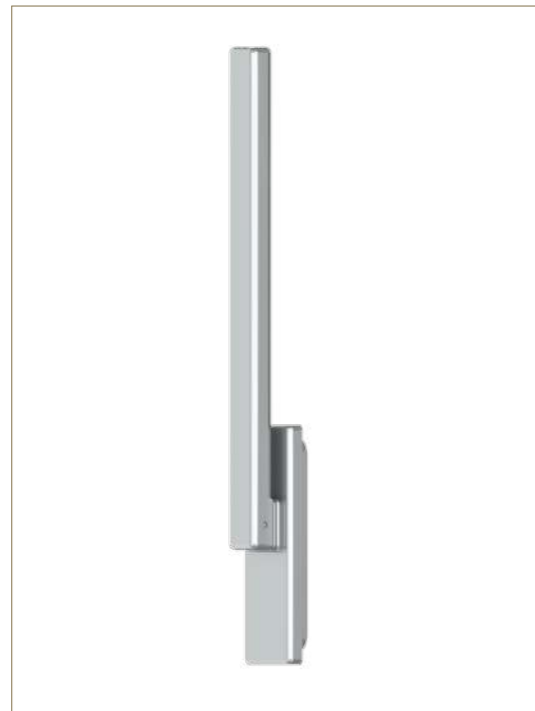
IMAGO⁺⁺ is an invitation to dare, for those who look forward and want the best. It means to be an alternative and evolved vision of what is already widely known. Imperceptible profiles, more natural light, wide horizons for a unique living comfort.



THE REAR HANDLE FOR A CLEAN, THIN PROFILE

The main innovation of this system is the position of the handle that is moved on the back of the central node. This simple but major change allows to further taper the frame removing the handle from the front jamb to deliver a clean profile.

Aiming to large openings, this system allows to increase in the number of sliding sashes to manage greater opening surfaces, thanks to an easy overlapping.

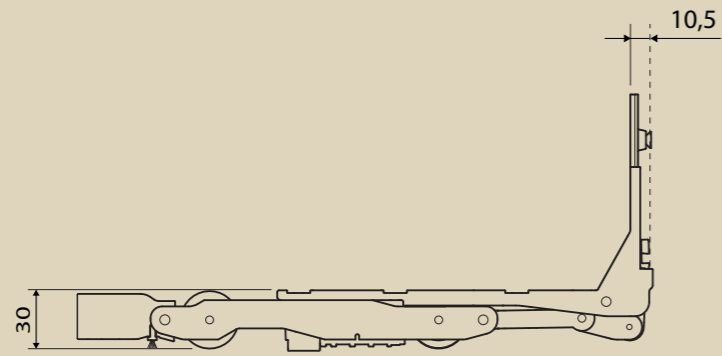


LEANER REAR LOCK

Pursuing the idea of minimal profiles, the lock case is placed in the rear side of the moving sash, perpendicular to the glass surface, reducing the size of jambs.

The lock guarantees the same actuation torque of the traditional lock.



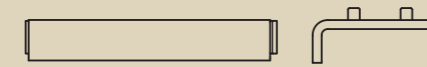
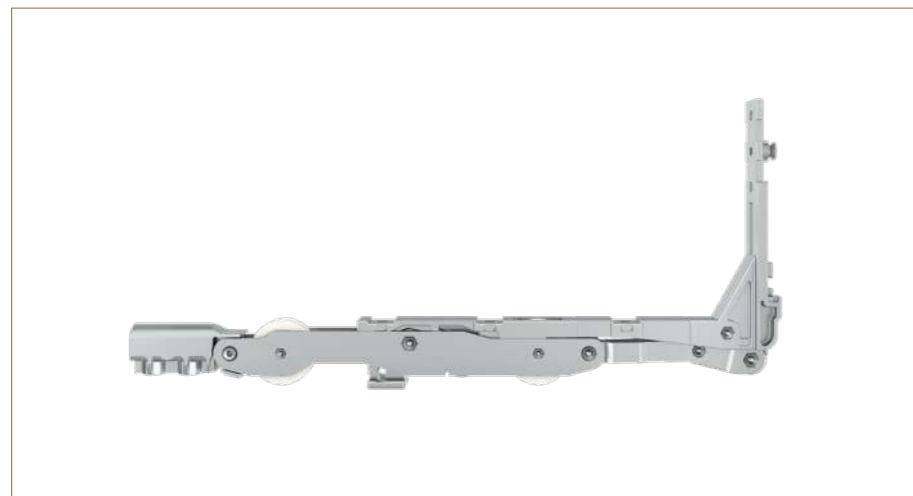


REAR CARRIAGE

Thanks to some small but major changes, the new IMAGO⁺⁺ carriage allows the transmission of opening and closing motion from lock to moving rod.

The carriages transmit the movement of the lock to a front closure that allows to secure the sash on the frame.

The introduction of this concept doesn't affect the loading capacity and the minimal size.



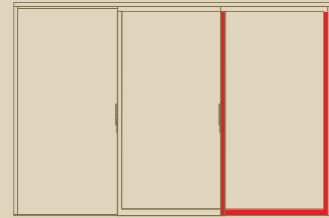
LIFTING DEVICE

This lifting accessory aims to be the solution that allows to lift heavy sashes keeping low the forces to move the handle. In particular, this device is able to subtract the equivalent of 150 kg of vertical thrust from the door and consequently the rotation of the handle during lifting is reduced.

In addition, a second advantage is slowing down the return of the handle when closing, preventing sudden and rapid returns.

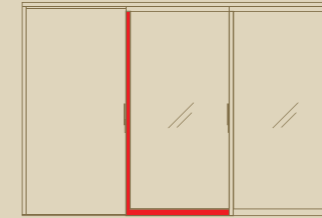


3 SIDES HARDWARE CONFIGURATION FOR FRAME CLOSURE SASHES



Configuration for primary sashes that allows closing on frame pins to ensure performance and safety according to market needs.

2 SIDES HARDWARE CONFIGURATION FOR SECONDARY SASHES

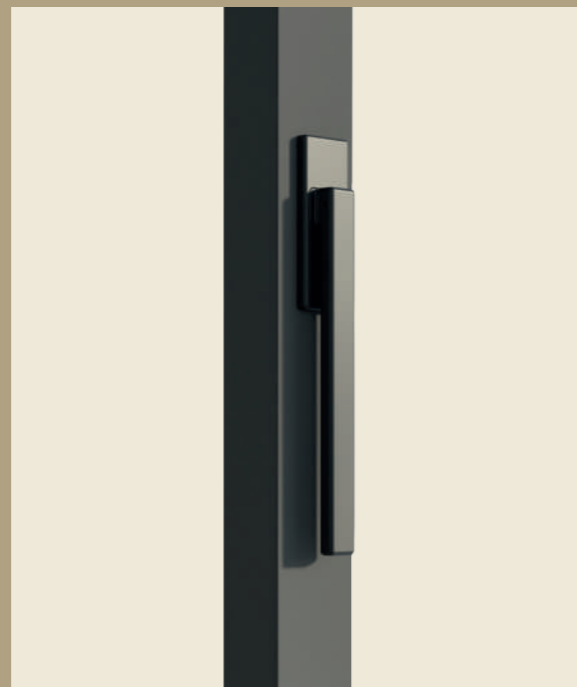
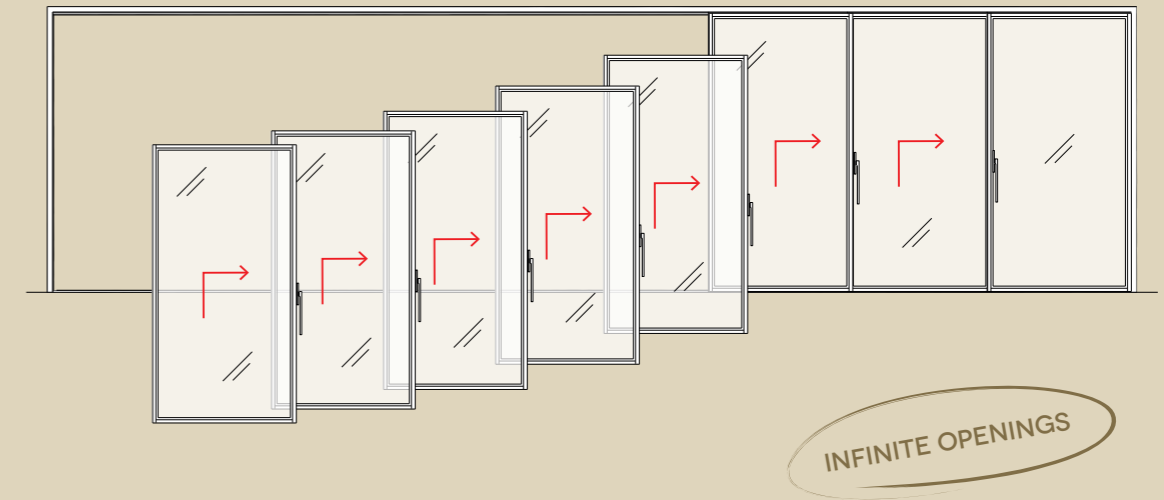


Configuration for secondary sashes which allows to create infinite sliding openings with complete overlap of the sashes.



MULTISLIDE LIFT AND SLIDE

Imago++ Multislide allows to move several doors simultaneously and to create infinite openings thanks to the rear handle positioned on the rear side of the central node.

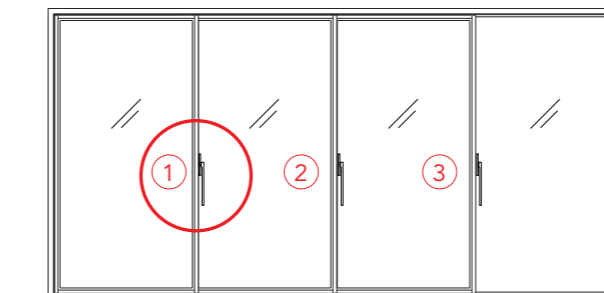


REAR HANDLE

The rear handle, positioned on the rear side of the central node does not protrude when sliding allowing perfect and complete overlapping of the sashes.

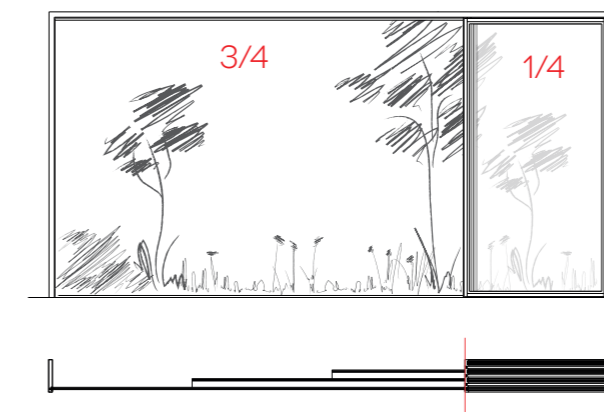
Moreover, in this way, the front jamb can be embedded into the frame.

OPENING SEQUENCE



- Rotate in sequence the handles 1, 2, 3.
- Move the first sash.
- Move following the sequence all other sashes.

SASHES OVERLAPPING



PERFECT ALIGNMENT OF THE SASHES WHILE OPENING

For the same wall hole size, it allows the opening of larger areas compared to traditional systems.

IMAGO⁺⁺

MORE DESIGN AND SOLUTIONS



Open, Close, Live

Alban Giacomo SpA
Via A. De Gasperi 75,
36060 Romano d'Ezzelino (VI) Italy
+39 0424 832 832
www.agb.it - info@agb.it

MADE IN ITALY